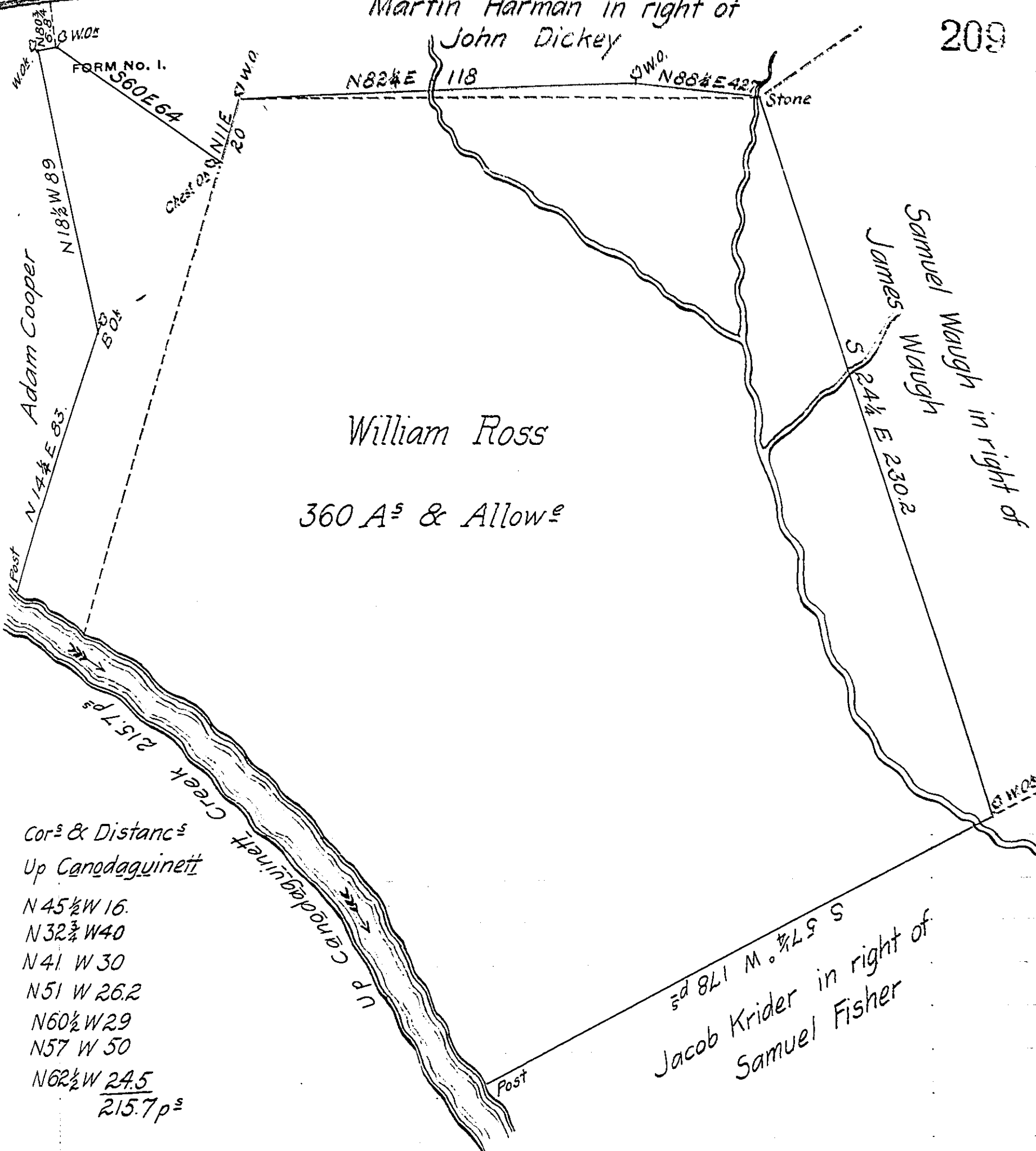


Martin Harman in right of
John Dickey

209



Cor^s & Distanc^s
 Up Canodaguinet
 N 45 1/2 W 16.
 N 32 3/4 W 40
 N 41 W 30
 N 51 W 26.2
 N 60 1/2 W 29
 N 57 W 50
 N 62 1/2 W 24.5
 215.7 p^s

*Draught of a tract of Land situate in East Pennsboro Town-
 ship Cumb^d County Cont^g three Hundred and sixty Acres & Allow-
 ance of Six p^r Ct^l for roads &c. Resurveyed December 2nd Anno
 Domini 1823 In pursuance of an Order of Resurvey dat^d November the
 24 Anno Domini 1823, Warrant granted to William Ross dat^d May 19th
 A. Dom. 1750.*

*Sam^l Ruby
 D.S.*

To Samuel Cochran Esquire Surveyor General.

IN TESTIMONY that the above is a copy of the original remaining on file in
 the Department of Internal Affairs of Pennsylvania, made
 conformably to an Act of Assembly approved the 16th day of
 February, 1833, I have hereunto set my Hand and caused
 the Seal of said Department to be affixed at Harrisburg.
 this twenty fourth day of September 1906.

Isaac D. Brown
 Secretary of Internal Affairs.